

Package K4-10S

Description

K4-10S Package consists of the state-of-the-art moisture meter Ligno-meter K and extension cables with screws (pins and probes as add-on) to monitor moisture conditions in the building envelope. The Electrode E14-V is included to take moisture measurements everywhere else.

Applications

System allows monitoring remote, hard to reach areas during repairs, after repairs and when the walls are closed up again. Works for short-term and long-term monitoring. Add EL pins to reach up to 7" deep. E14-V inspector electrode is used for spot-checking.

Advantages

The Lignometer K is Lignomat's most advanced pin meter with the widest moisture range and individual correction settings for domestic and tropical wood species, OSB, panel products, drywall and reference scales for laminates, carpets, concrete and other moisture sensitive materials. Reliable, accurate and sturdy.

Cables/pins make it easy to monitor water remediation jobs or checking for leaks and moisture infiltration in the building envelope. Once cables/pins are installed, the meter can be connected at any time. Readings taken at different times are truly comparable, since all measurements are taken from the same spot at the same depth.

Use electrode E14-V to detect moisture problems. E14 is made to reach corners, around window sills and all those hard to reach places where moisture may hide.

Easiest Monitoring of Problem Areas

Leaky roofs, wet crawl spaces, faulty installed windows, broken pipes, a cracked waterline behind a refrigerator can be a cause for moisture problems. Unnoticed moisture accumulations can have severe consequences, floor coverings are ruined, dry rot develops and structural components disintegrate. Monitoring can also be used to track the drying-out process after water damage has occurred.

System works well for short and long-term monitoring in buildings. Using extension cables has the advantage, that areas can be monitored, which are totally inaccessible after the walls are closed up. Measurements are obtained quickly by connecting the open cable end to the meter.

Monitoring: Measurements taken periodically from the same spot at the same depth will produce a series of truly comparable moisture percentages.

The values show, if the drying-out process is proceeding as expected or if a new problem is occurring.

The LP-H cable has loops on one end to connect pins or screws and 4mm plugs on the other end to plug into the adapter H at the moisture meter. When using screws the meter indicates the highest moisture value in the measured area between the screws. That could be at the surface or at the depth the screws have been set, because un-coated screws measure the wettest spot. Teflon-coated pins only measure at the tip, they will indicate a dry inside even if the surface is wet. Cables should be ordered long enough to keep the open cable-end in an easily accessible area, standard length is 3ft.

Measurements are taken by plugging the open cable-end into the adapter H and connecting the adapter H to the meter. If cables are already installed to monitor the drying-out process, they could be left in place for long-term monitoring.

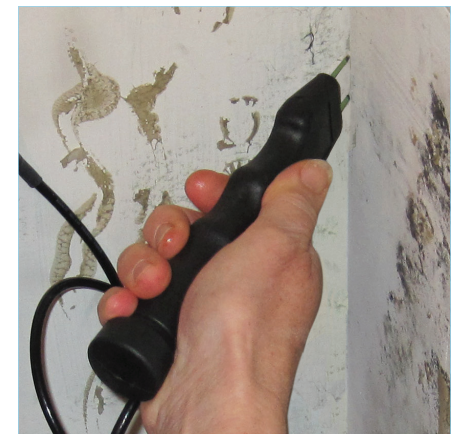
For data logging moisture and humidity measurements automatically, we offer the MC-Tracker a data logger for moisture content and relative humidity.



Detection is the first step in Prevention. Cable/pin system allows checking for moisture accumulations in closed-up, unreachable areas.



Install cables and pins in moisture critical areas. Measure periodically to check, if moisture problems are back.



Electrode E14-V is shaped to fit into tight places where moisture is hiding but hard to measure.

Meter Specifications

Size: 4.75"L X 2.5"W X 1"H

Measuring Range:

- Wood: 5-99% (pin)
- Gypsum, Sheetrock, Wall Boards: 0-7%
- Reference Scale: 0-99

Display: Resolution: 0.1% for all values

Species Corrections

over 170 settings to correct for:

- domestic and tropical wood species
 - bamboos, vertical, horizontal and strand
 - OSB and wood-based panel products
 - gypsum, drywall, wall boards interior, exterior, and water resistant (%)
- 3 Reference Scale for building materials including concrete

Operation: Working with the Ligno-VersaTec is simple with clearly marked push buttons. Meter fits comfortable in your hand for pin and pinless readings.

Functions:

Push SET repeatedly to dial settings for species, wood temperature and measuring depth.

Change settings with up and down keys. Push READ to obtain moisture measurements.

Instrument stays on for 3 minutes, then turns itself off.

HOLD function is available for measuring in places, where the display cannot be seen or when taking photos of the display.

Display shows moisture percentage, wood species, wood temperature (only pin) and depth settings (only pinless).

Pins and Cables

An assortment of pins is available:

- off-the-shelf, stainless steel screws 1/2"
- EG pins, teflon-coated 3/4"
- EL pins, teflon-coated 7", upon request EL pins can be shortened

Hardware to connect screws/pins to LP-mini cables is included

The LP-H cable connects the meter to EG, EL pins and screws. The cables have a standard length of 3 ft. Cables comes with loops for pins and 4mmplugs to connect to Adapter H and-meter. Cables can be ordered in sets of 1, 3, 5. Longer cables are available upon request.

Electrode E14-V Specifications

Weight 5 oz. Length without pins 7".

The electrode E14-V comes with a cable to connect to the Lignometer K.

E14 pins are teflon coated to only measure at the tip and come in two options:

- EG Pins insulated, measuring depth 3/4"
- EL Pins insulated, measuring depth 7"

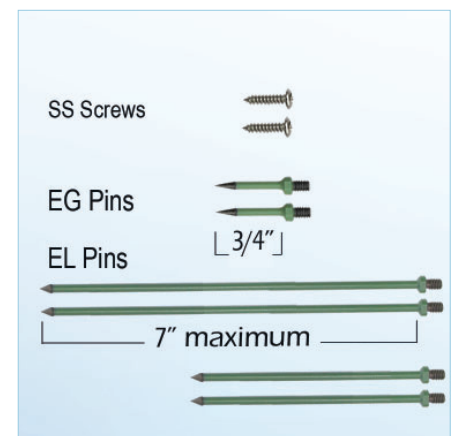
1 pair EG pins is included with the electrode E14-V. EL pins are not included.

Package Includes

- 1 Lignometer K meter with BNC connector for an assortment of external electrodes and extension cables (with Adapter H)
- 1 9V battery
- 1 laminated wood group card, 1 instruction manual
- 1 LP-H cable
- 1 set of stainless steel screws 1/2" (optional sets of 3 and 5 cables/screws)
- 1 Inspector electrode E14-V with cable for Ligno-VersaTec and EG pins teflon-coated
- 1 Case S



At any time, the Lignometer K can be used with the electrode E12 for spot-checking moisture conditions.



Assortment of screws and pins are available from 1/2" up to 7" long. 7" long pins can be shortened upon request.



Inspector Electrode E14-V is designed to measure moisture problem areas even if the area is small and hard to reach. For other application, the E14-V is tough enough to hammer pins into hard materials.