

# 🏠 Sherwood Plaza 📍 [16260 SW Langer Drive, Sherwood, OR 97140](#)



## Available

**Available Units:** 4  
**Total Units:** 26  
**Gross Leasable Area:** 80,216 SF  
**Parking Spaces:** 416  
**Office:** 503-925-1850 ext. 300  
**Email:** [tdougherty@mercurydev.com](mailto:tdougherty@mercurydev.com)

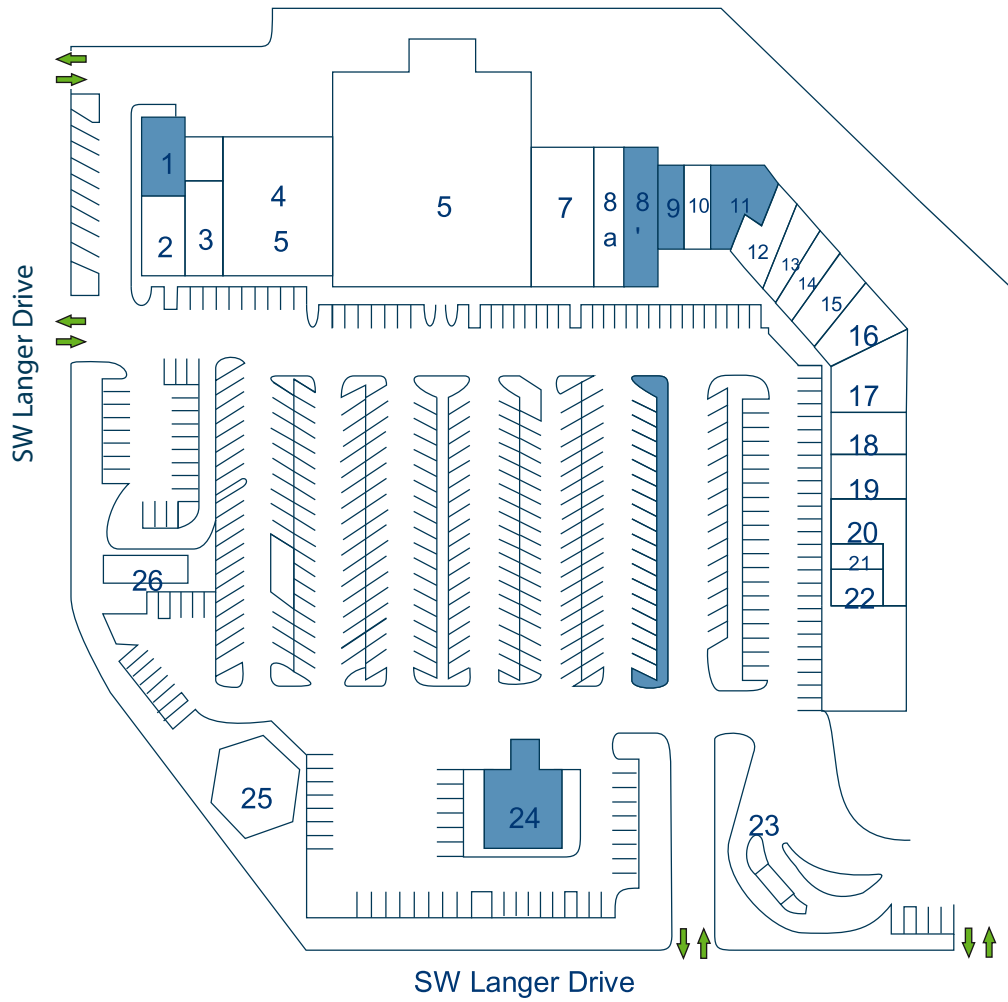
## Overview

This neighborhood oriented strip center is situated in the heart of Sherwood's retail corridor and has direct visibility from highway 99W. Sherwood Plaza is anchored by Safari Sam's and derives great daily traffic from tenants such as The Dollar Tree, The US Post Office, Dutch Brothers, Taco Bell, Papa Murphy's, and The Sherwood Liquor Store. This center boasts close proximity to the busy Tualatin Sherwood Rd and HWY 99W. With over 50,000 passing vehicles per day, and sharing the market with stores such as Safeway, Target, and Walmart, Sherwood Plaza will remain essential in fulfilling the community's retail needs.

## Demographics

	1 mile	2 miles	3 miles
Population	9,644	19,275	31,065
Median HH Income	\$83,750	\$90,040	\$86,341
Median Age	35.1	35.8	37.3
Total Housing Units	3,610	6,861	11,685
Median Disposable Income	\$60,771	\$66,012	\$63,157
College Tuition	\$3,925,355	\$8,754,231	\$14,903,902

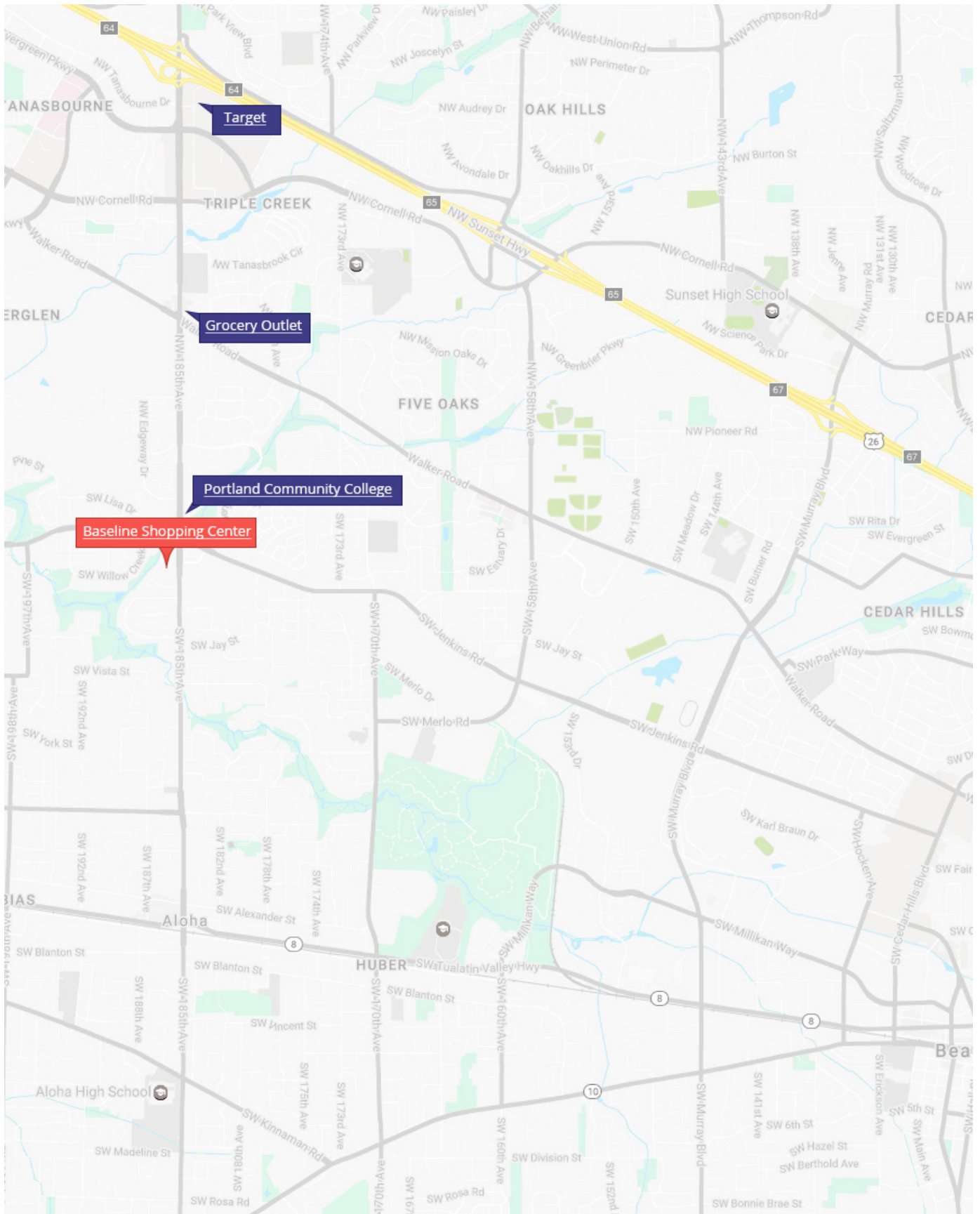
# Site map



For Illustration Purposes Only

<b>01</b> Papa Murphy's Pizza	<b>10</b> Denev Hair Studio	<b>19</b> Mercury Development
<b>02</b> <b>Unit Available</b>	<b>11</b> Sherwood Liquor Store	<b>20</b> Shari's Family Restaurant
<b>03</b> Icon Nails	<b>12</b> Chinese Panda Restaurant	<b>21</b> Taco Bell
<b>04</b> Dollar Tree	<b>13</b> Wash Tub Laundromat	<b>22</b> Game Haven
<b>05</b> Safari Sam's Kids Club	<b>14</b> Musa Taekwondo	<b>23</b> <b>Unit Available</b>
<b>06</b> U.S. Post Office	<b>15</b> Mudpuddles Toys & Books	<b>24</b> Tenant
<b>07</b> Kumon Math and Reading	<b>16</b> Subway	<b>25</b> Tenant
<b>08</b> Sanita Med Spa	<b>17</b> McKenzie Pub	<b>26</b> Tenant
<b>09</b> <b>Unit Available</b>	<b>18</b> The Perfect Gift	

# Trade map





 Photos





# Sherwood Plaza - Unit 1 16260 SW Langer Drive, Sherwood, OR 97140



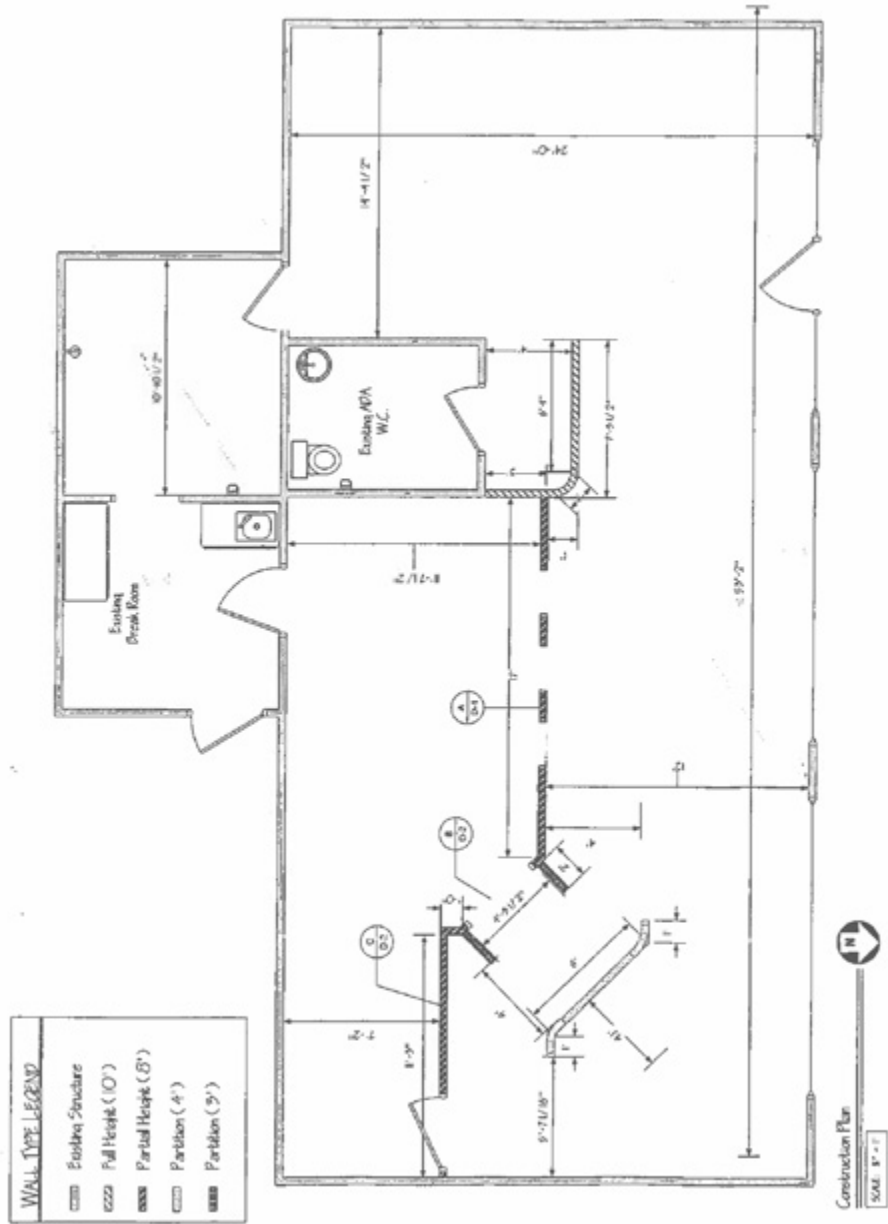
## Unit info

<b>Square Footage:</b>	1,603 SF
<b>Dimensions:</b>	N/A
<b>Rate:</b>	Rental Rate Negotiable
<b>Available on:</b>	Currently Available
<b>Leasing Agent:</b>	Timothy Dougherty, CLS
<b>Office:</b>	503-925-1850 ext. 300
<b>Mobile:</b>	503-349-1575
<b>Mail:</b>	tdougherty@mercurydev.com

## Features

- Highly visible end-cap unit fronting Langer Drive and HWY 99
- Improved Electrical
- Improved Plumbing
- ADA Restroom
- Break Room
- Large storage room
- Rear loading dock
- Rear corridor access

# Unit 1 - floor plan





 Unit 1 - photos

---

